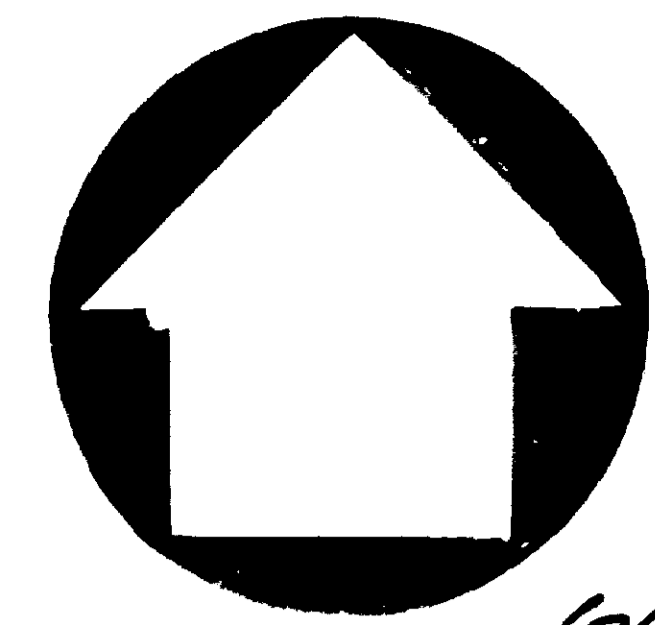


RECORD OF SURVEY

BEING A SURVEY OF SECTION 4 AND A PORTION OF FRACTION SECTION 9, T.1N., R.4W., S.B.M., IN THE COUNTY OF SAN BERNARDINO, STATE OF CALIFORNIA

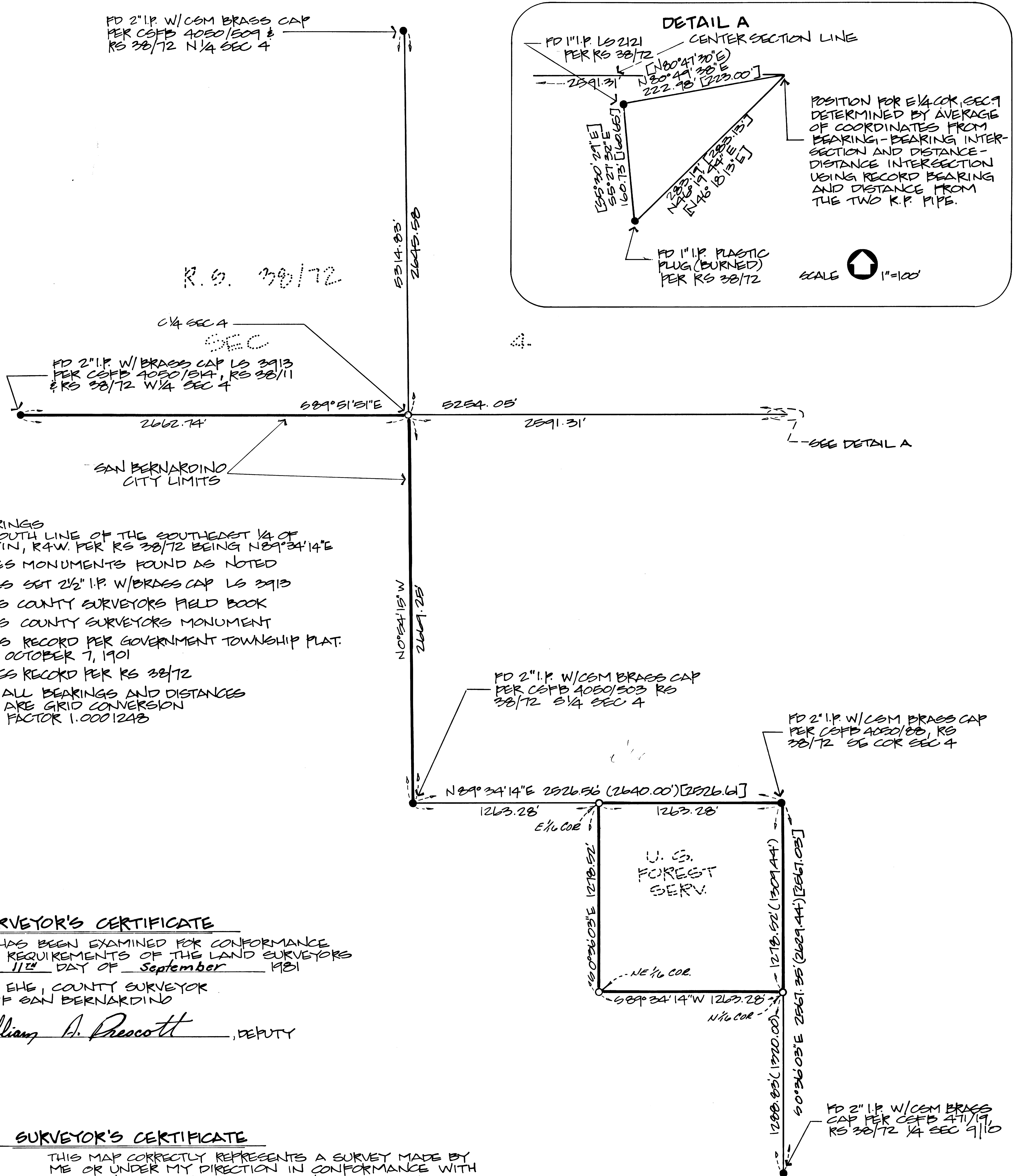
KRUEPER ENGINEERING & ASSOC., INC.

AUGUST 1981



SCALE
1"=500'

44/19



NOTES

- BASIS OF BEARINGS BEING THE SOUTH LINE OF THE SOUTHEAST 1/4 OF SECTION 4, T.1N., R.4W. PER RS 38/72 BEING N 89° 34' 14" E
- INDICATES MONUMENTS FOUND AS NOTED
 - INDICATES SET 2 1/2" I.P. W/ BRASS CAP LS 3913
 - C.S.F.B. INDICATES COUNTY SURVEYORS FIELD BOOK
 - CSM INDICATES COUNTY SURVEYORS MONUMENT
 - () INDICATES RECORD PER GOVERNMENT TOWNSHIP PLAT. DATED OCTOBER 7, 1901
 - [] INDICATES RECORD PER RS 38/72
- NOTE: ALL BEARINGS AND DISTANCES ARE GRID CONVERSION FACTOR 1.0001248

COUNTY SURVEYOR'S CERTIFICATE

THIS MAP HAS BEEN EXAMINED FOR CONFORMANCE WITH THE REQUIREMENTS OF THE LAND SURVEYORS ACT THIS 11th DAY OF September 1981

EUGENE P. EHE, COUNTY SURVEYOR
COUNTY OF SAN BERNARDINO

BY William A. Prescott, DEPUTY

SURVEYOR'S CERTIFICATE

THIS MAP CORRECTLY REPRESENTS A SURVEY MADE BY ME OR UNDER MY DIRECTION IN CONFORMANCE WITH THE LAND SURVEYORS ACT AT THE REQUEST OF THE UNITED STATES FOREST SERVICE IN AUGUST 1981

Carson L. Storer
CARSON L. STORER L.S. 3913

81-207820
U.S. FOREST SERVICE
ON... SEPTEMBER 18, 1981
AT... 3:59 P.M. ... IN
BOOK. 44... PAGE. 19...
OF RECORDS OF SURVEY
AN SAN BERNARDINO COUNTY RECORDER
\$ 5.00

44/19